



## Product sheet

# Kids Place Bunny

### About the product

Kids Place Bunny is a unique wall design in the shape of a rabbit. The rabbit is made of a 9 mm thick PET felt. You can fix the rabbit's elements against each other. But to get a more playful effect, you can alternatively choose to stick the elements onto the wall at some distance from each other. It is how you create special wall decorations for the nursery or baby room!

### Material

Made from 9 mm PET felt at least 50% of which consists of recycled material.

### Size

Kids Place Bunny wall decoration is 118 cm in height and 92 cm in width.

### Colours

Kids Place Bunny consists of several elements. These are divided into 2 colours.

The rabbit comes in 2 standard colour combinations:

- A - sand and beige
- B - marle and light blue

### Customised solutions

At an additional cost, you may also choose your own colour combination, please contact us for this.

### Fire safety

The felt panels have been tested in accordance with EN-13501 and meet fire class B-s1, do.

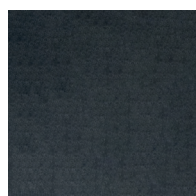
### Acoustic PET felt solutions for all purposes!

EASYfelt is specialised in PET felt solutions. We offer various decorative solutions.

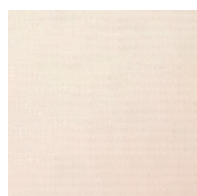




Colour overview  
PET felt 9 mm



Anthracite



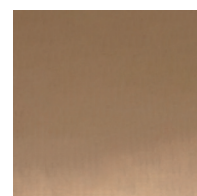
Beige



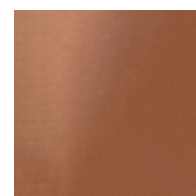
Blue



Brown



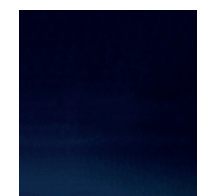
Camel



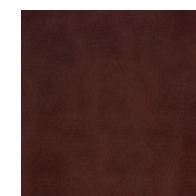
Caramel



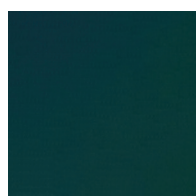
Coconut



Dark Blue



Dark Brown



Dark Green



Denim



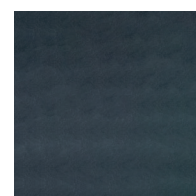
Elephant



Frog



Grass



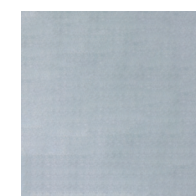
Grey



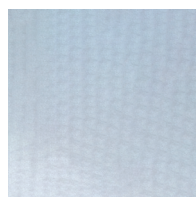
Khaki



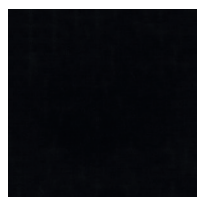
Light Blue



Light Grey



Marble



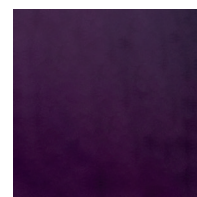
Noire



Orange



Petrol



Purple



Red



Sand



Violet



Wine Red



Yellow